

Winbox

Document revision 1.0 (Fri Mar 05 07:59:49 GMT 2004)

This document applies to V2.9

Table of Contents

[Table of Contents](#)

[General Information](#)

[Summary](#)

[Description](#)

[Troubleshooting](#)

[Description](#)

General Information

Summary

The MikroTik RouterOS can be configured remotely, using **Telnet**, **SSH**, **WinBox Console** or **Webbox**. In this manual we will discuss how to use the interactive **WinBox** console.

Description

The Winbox console is used for accessing the MikroTik Router configuration and management features, using graphical user interface (GUI).

All Winbox interface functions are as close as possible to Console functions: all Winbox functions are exactly in the same hierarchy in Terminal Console and vice versa (except functions that are not implemented in Winbox). That is why there are no Winbox sections in the manual.

The Winbox Console plugin loader, the winbox.exe program, can be retrieved from the MikroTik router, the URL is **http://router_address/winbox/winbox.exe** Use any web browser on Windows 95/98/ME/NT4.0/2000/XP or Linux to retrieve the **winbox.exe** executable file from Router. If your router is not specifically configured, you can also type in the web-browser just **http://router_address**

The Winbox plugins are cached on the local disk for each MikroTik RouterOS version. The plugins are not downloaded, if they are in the cache, and the router has not been upgraded since the last time it has been accessed.

Starting the Winbox Console

When connecting to the MikroTik router via http (TCP port 80 by default), the router's Welcome Page is displayed in the web browser:

Login

Winbox



Winbox is the graphical configuration application for RouterOS. [Download it](#), run it and connect to your router - all RouterOS functionality can be controlled with this application.

Webbox



This is a web based configuration interface for RouterOS. Log in above to connect to this router - some of the most important RouterOS features can be controlled within this interface.

Telnet



[Connect with telnet](#) and you will have access to the command line interface of RouterOS, every function of RouterOS can be controlled with it.

Graphs



These [graphs](#) show you statistical information about your router's interfaces and the traffic that goes through them. Before you use [Graphs](#), [you have to configure them](#).

Documentation



We have written many tutorials, examples and manuals for RouterOS, all of which are available here [on our homepage](#). If you get into trouble, you can always ask for [technical support](#).

License

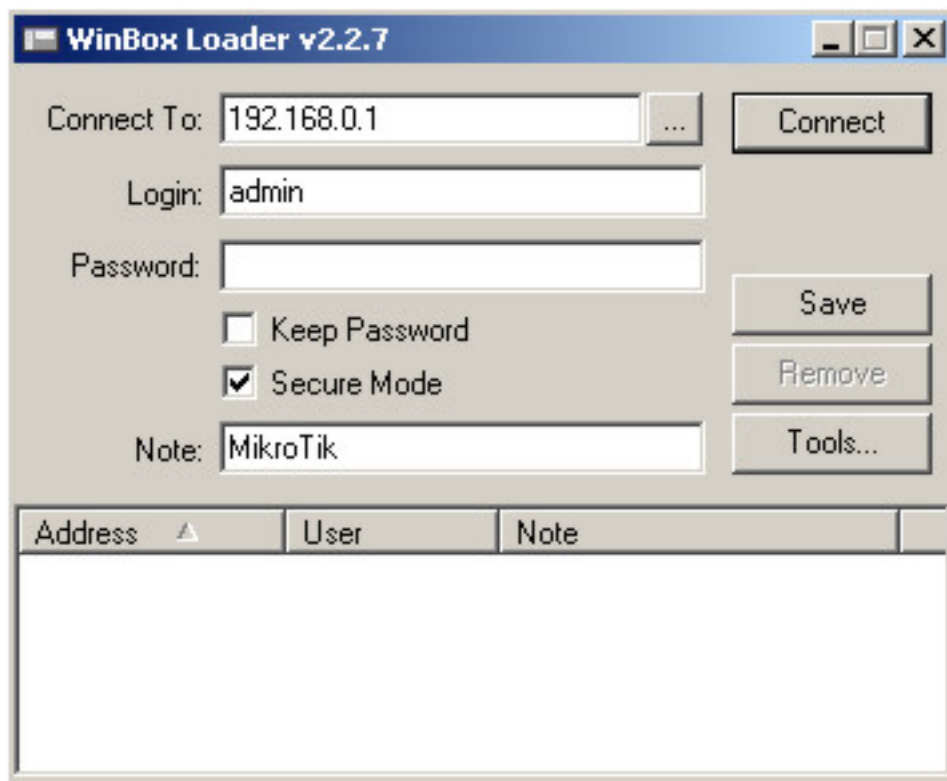


Mikrotik, RouterOS and the MikroTik logo are registered trademarks of MikroTik Ltd. Please read [the license](#)

mikrotik routers 2.9.5 configuration page

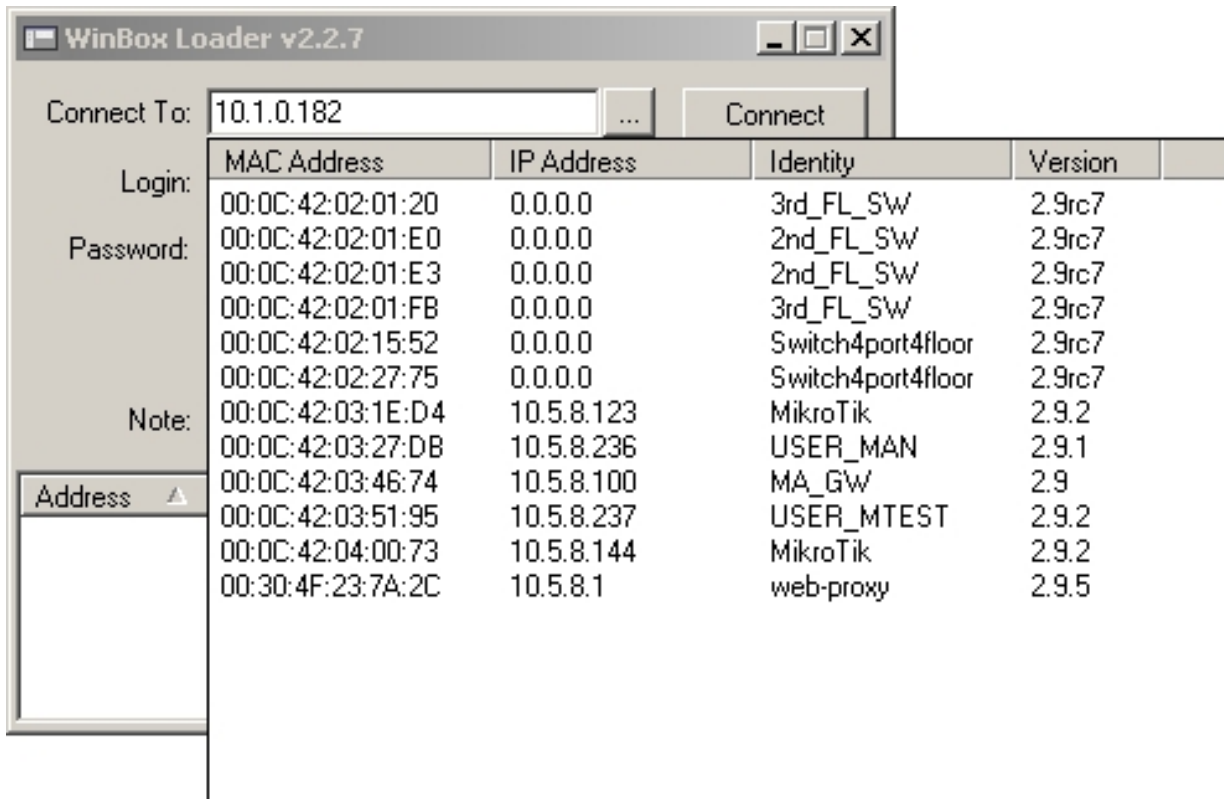
By clicking on the Winbox link you can start the winbox.exe download. Choose **Open** to start the Winbox loader program (you can also save this program to your local disk, and run it from there)


The **winbox.exe** program opens the Winbox login window.



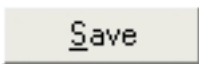
where:

-  discovers and shows MNDP (MikroTik Neighbor Discovery Protocol) or CDP (Cisco Discovery Protocol) devices.



- 

logs on to the router by specified IP address (and the port number if you have changed it from the default value of 80) or MAC Address (if the router is in the same subnet), user name, and password.

- 

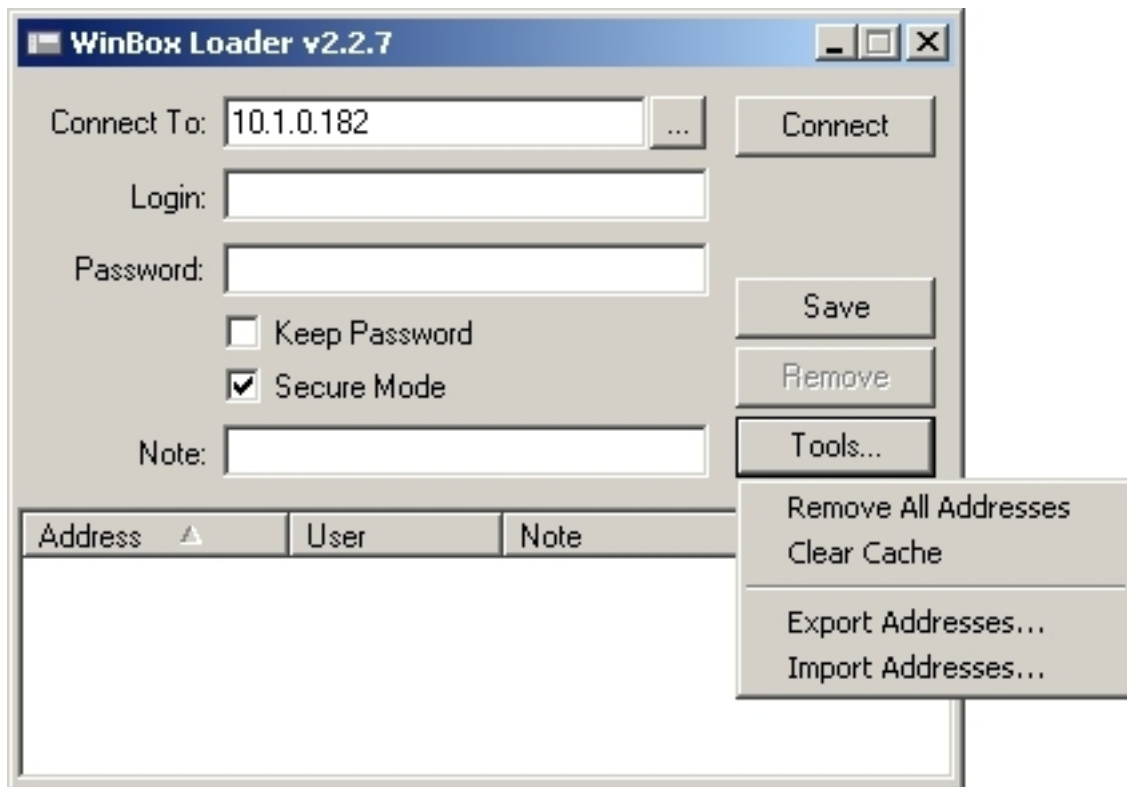
saves the current sessions to the list (to run them, just double-click on an item).

- 

removes selected item from the list.

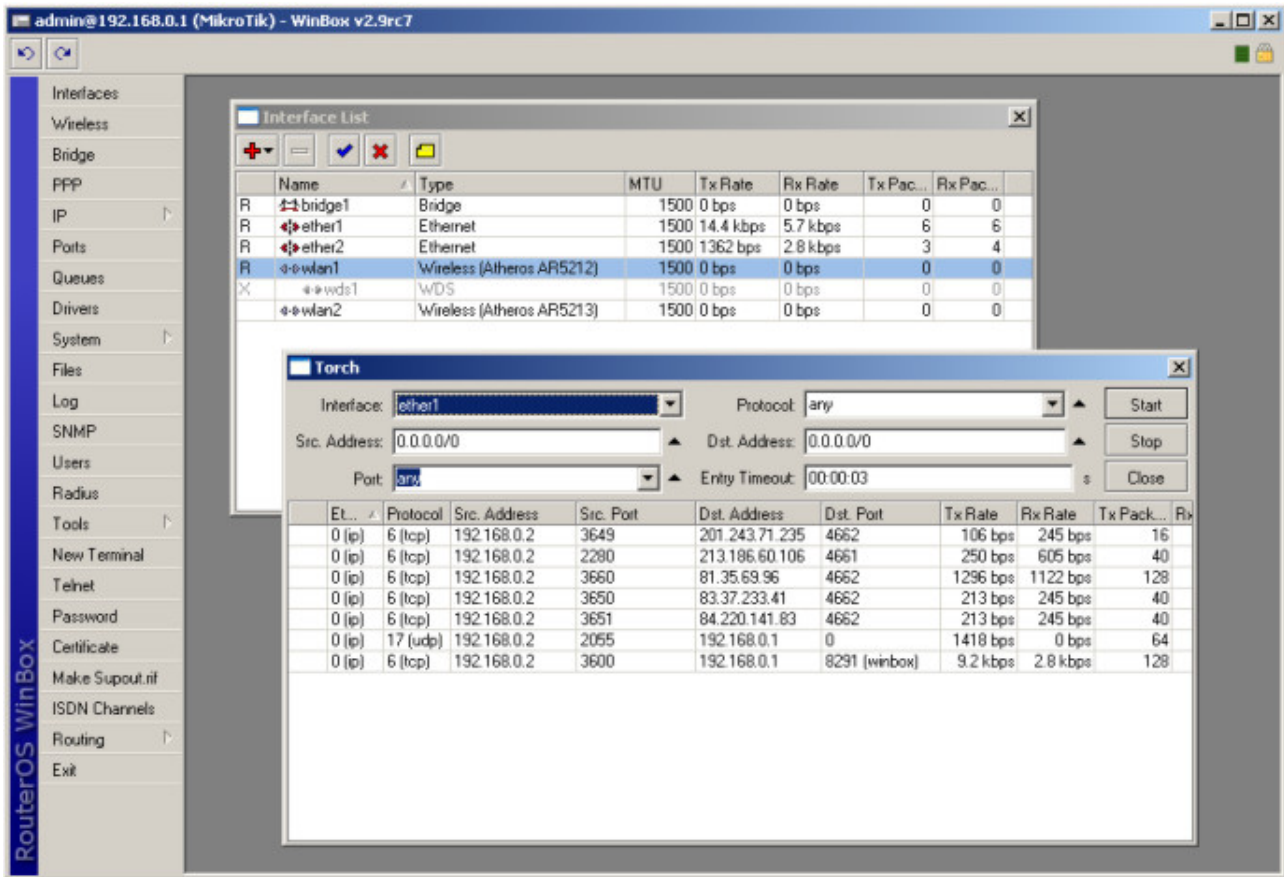
- 

removes all items from the list, clears cache on the local disk, imports addresses from wbx file or exports them to wbx file.



- Secure Mode provides privacy and data integrity between WinBox and RouterOS by means of TLS (Transport Layer Security) protocol.
- Keep Password Saves password as a plain text on a local hard drive. **Warning:** storing passwords in plain text allows anybody with access to your files to read the password from there.

The Winbox Console of the router:








The Winbox Console uses TCP port 8291. After logging onto the router you can work with the MikroTik router's configuration through the Winbox console and perform the same tasks as using the regular console.





Overview of Common Functions

You can use the menu bar to navigate through the router's configuration menus, open configuration windows. By double clicking on some list items in the windows you can open configuration windows for the specific items, and so on.

There are some hints for using the Winbox Console:

- To open the required window, simply click on the corresponding menu item
-  Add a new entry
-  Remove an existing entry
-  Enable an item
-  Disable an item
- 

Make or edit a comment

-  Refresh a window
-  Undo an action
-  Redo an action
-  Logout from the Winbox Console

Troubleshooting

Description

- **Can I run WinBox on Linux?**
- Yes, you can run WinBox and connect to RouterOS, using Wine
- **I cannot open the Winbox Console**
Check the port and address for **www** service in **/ip service print** list. Make sure the address you are connecting from matches the network you've specified in **address** field and that you've specified the correct port in the Winbox loader. The command **/ip service set www port=80 address=0.0.0.0/0** will change these values to the default ones so you will be able to connect specifying just the correct address of the router in the address field of Winbox loader
- The Winbox Console uses TCP port 8291. Make sure you have access to it through the firewall.