



MikroTik User Meeting

MUM #50



MikroTik

- 100 employees
- Established 1996
- RouterOS created in 1997
- RouterBOARD created in 2002
- First MUM in Prague 2006
- Biggest MUM in 2012, Indonesia

Where are we?



MikroTik at the MUM

- John Tully (CEO)
- Arnis Riekstins (CTO)
- Edmunds Aperans (Sales, Training)
- Uldis Čerņevskis (Support, Training)
- Jānis Megis (Support, Training)
- Normunds Rustanovičs (Support)

Special thanks



Useful info

- Internet - SSID **MUM**
- Lunch with voucher only
- Exhibits hall
- Raffle at the end of MUM

After the MUM

- Presentation slides - wiki.mikrotik.com
- Videos - tiktube.com
- License will be emailed

PRODUCTS

CCR 1036

- 36 core CPU
- 12 Gigabit Ethernet ports
- 4 SFP ports



CCR 1016

- 16 core CPU
- 12 Gigabit Ethernet ports



CCR EXTENDED RAM

- CCR1036-12G-4S
- 16GB RAM included

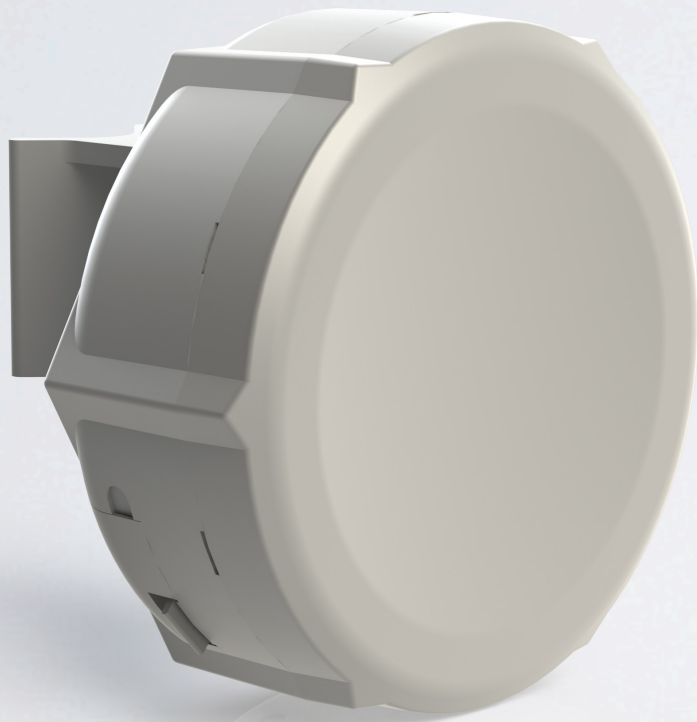


SFP MODULES

- Super low cost (from \$22)
- 1.25G and now 10G models
- DDMI supported

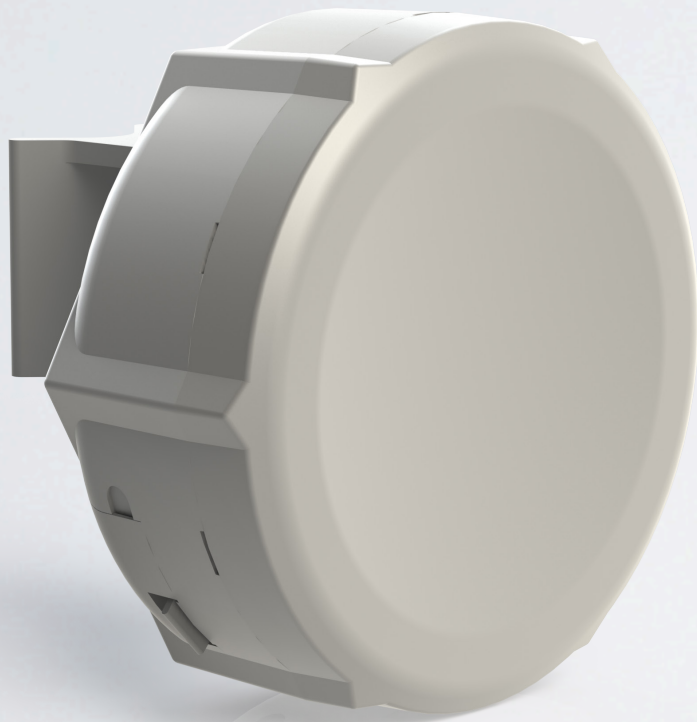


SXT 5GHZ



- High power model (30dBm, 5HPnD)
- “Lite” model (27dBm, Lite5)
- Both have new generation CPU

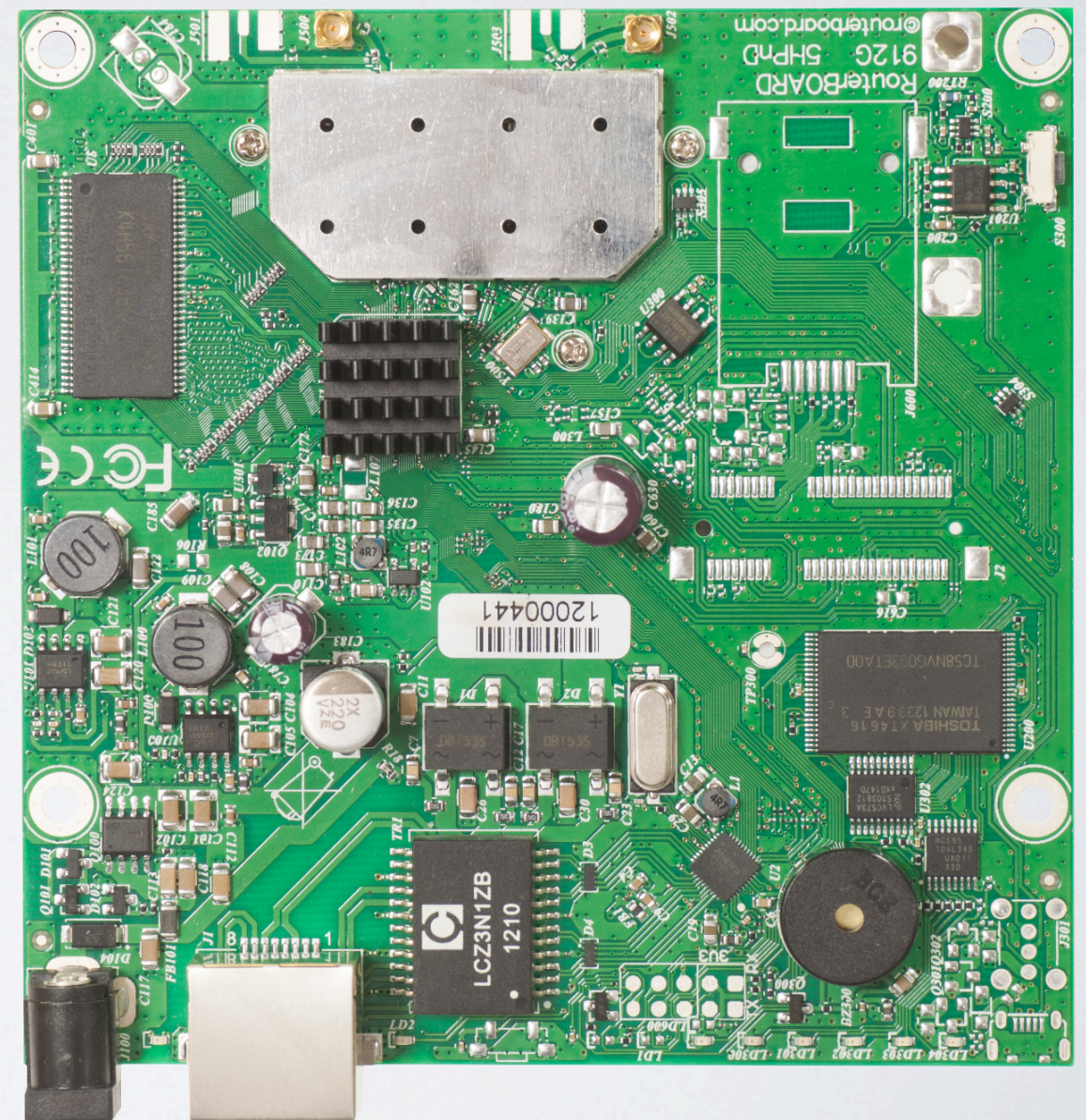
SXT 2GHZ



- High power Gigabit (32dBm, G-2HnD)
- “Lite” model (27dBm, Lite2)
- Both have new generation CPU

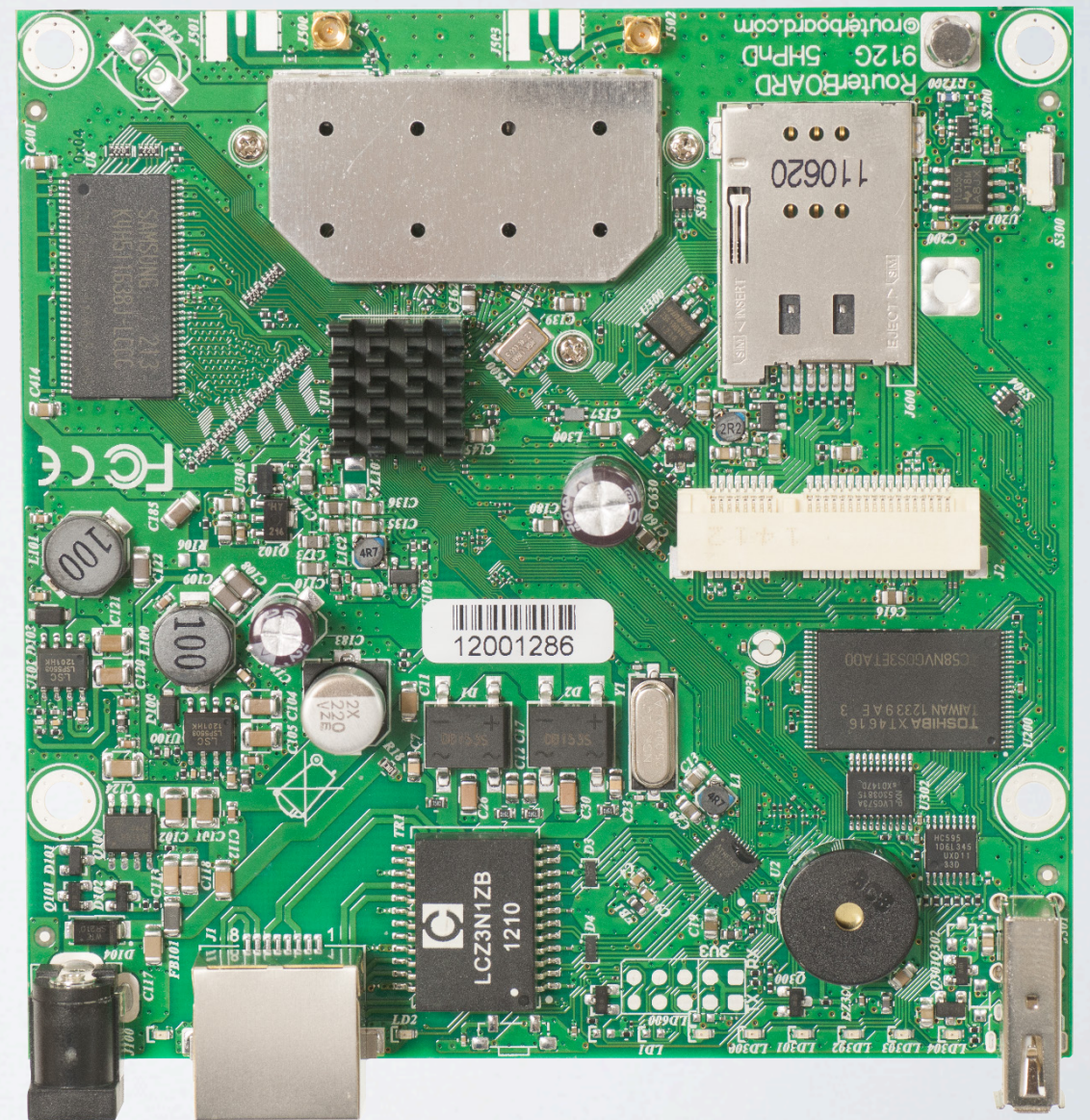
RB911G

- AR9xxx series CPU
- 2 or 5GHz models
- Gigabit ports, Dual Chain
- 30dBm (1000mW)



RB9 | 2G

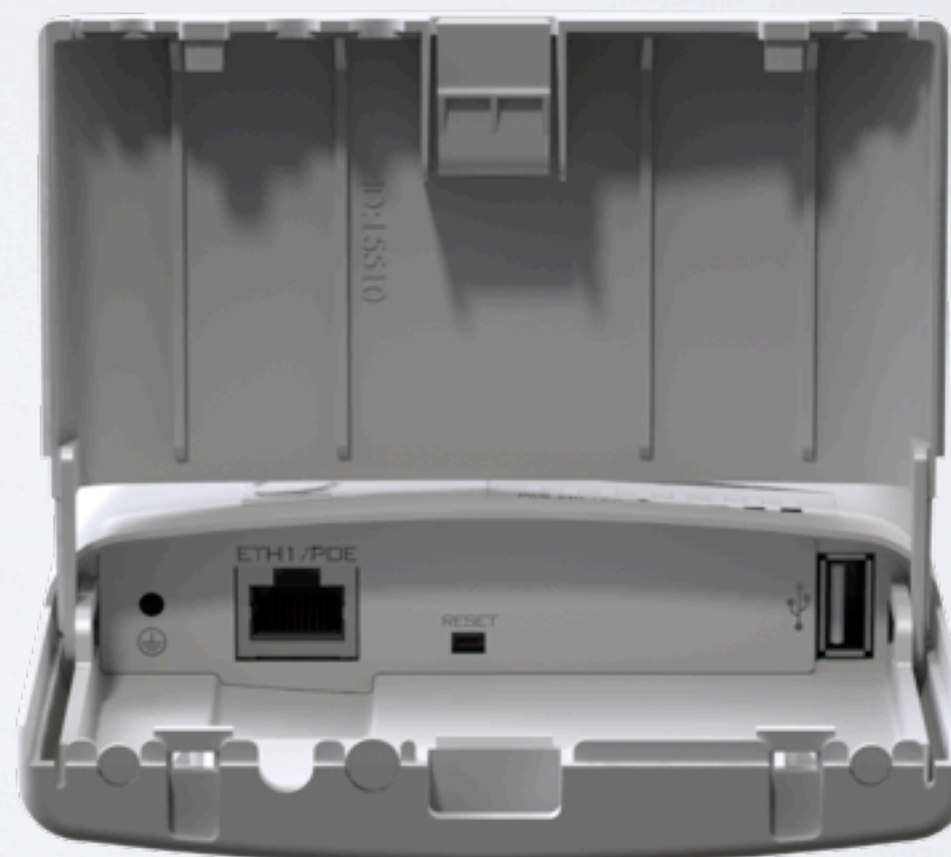
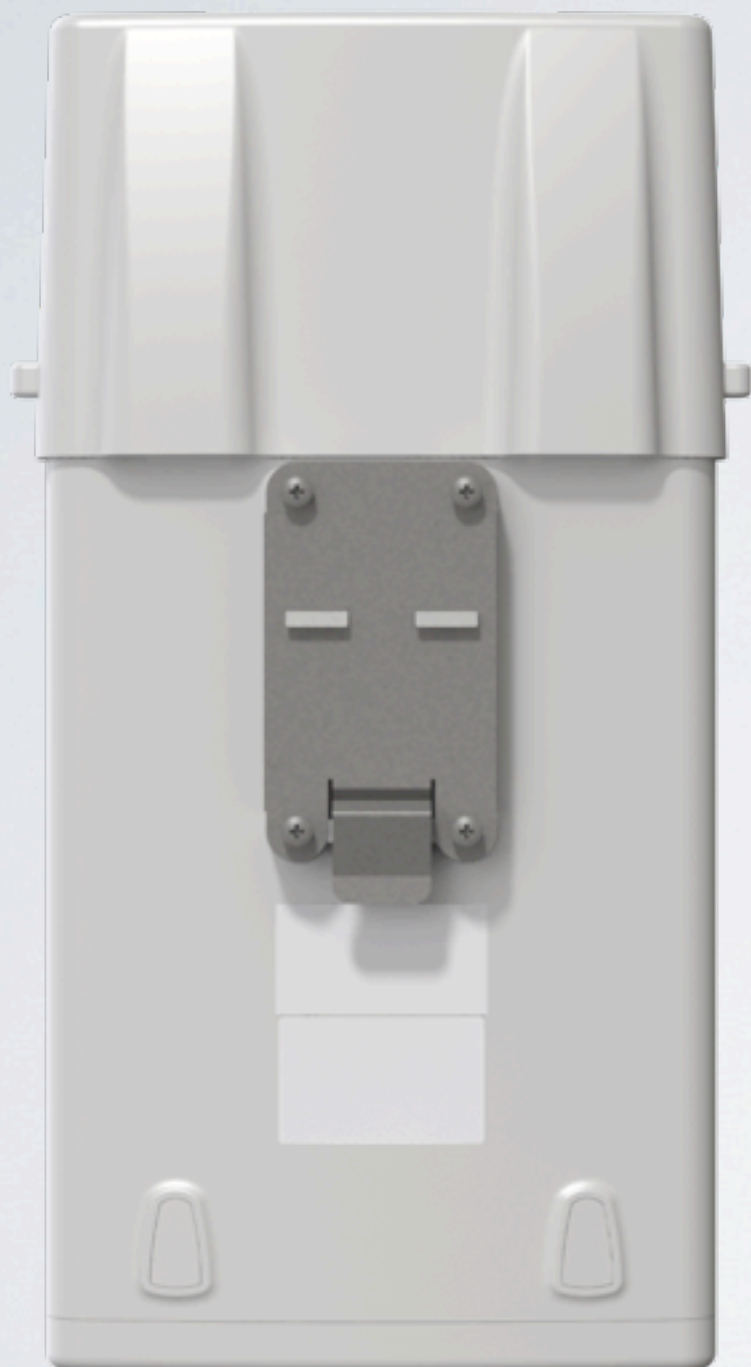
- miniPCI-e slot
- USB, more RAM
- 2 or 5GHz models
- Can be used for Multiband AP



RB912G OUTDOOR



- RP-SMA connectors
- Cable hood with rain protection
- Multiple mounting options
- 5GHz available
- 2GHz, End of September 2013



RB951UI

- SOHO AP
- 2.4 GHz, 1000mW
- 600MHz CPU, USB
- 5 port supports PoE-out

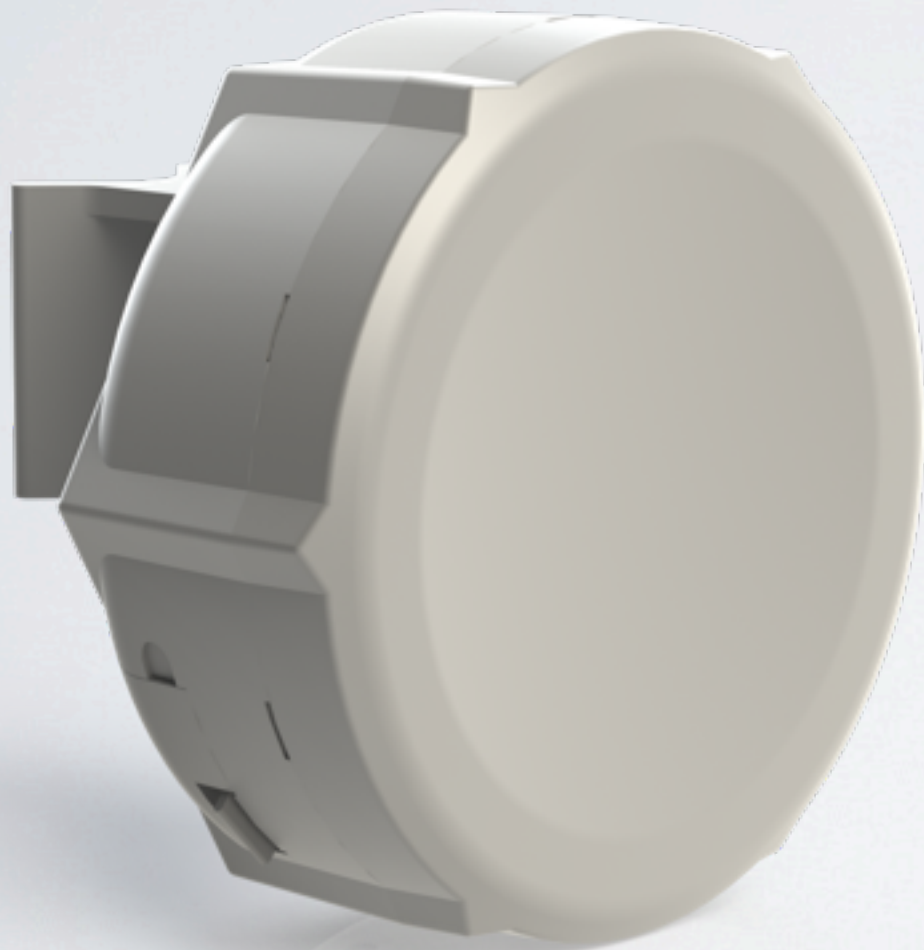


GROOVE 52

- Both bands built in
- Select 2 or 5Ghz
- AR9xxx CPU
- CPE or AP models available



SXT SA



- Wide beamwidth, 90 degrees
- Can be used as Sector
- 1000mW power
- Gigabit port
- 5GHz



CLOUD CORE ROUTER

SFP+

CCR1036-8G-2S+

- 8 Gigabit Ethernet ports, **2 SFP+** ports
- **10G** interfaces now possible
- 16GB RAM model also available (+EM)
- Highest performance MikroTik device ever
- Port speed no longer bottleneck, speed **2x**
- Total port speed **28Gbit**, which is new bottleneck
- Up to **42** million packets per second

NEW PRODUCTS

R11E-2HND



- miniPCI-e to fit RB912
- 2GHz model
- 800mW power
- New AR9580 chipset
- uFl connectors

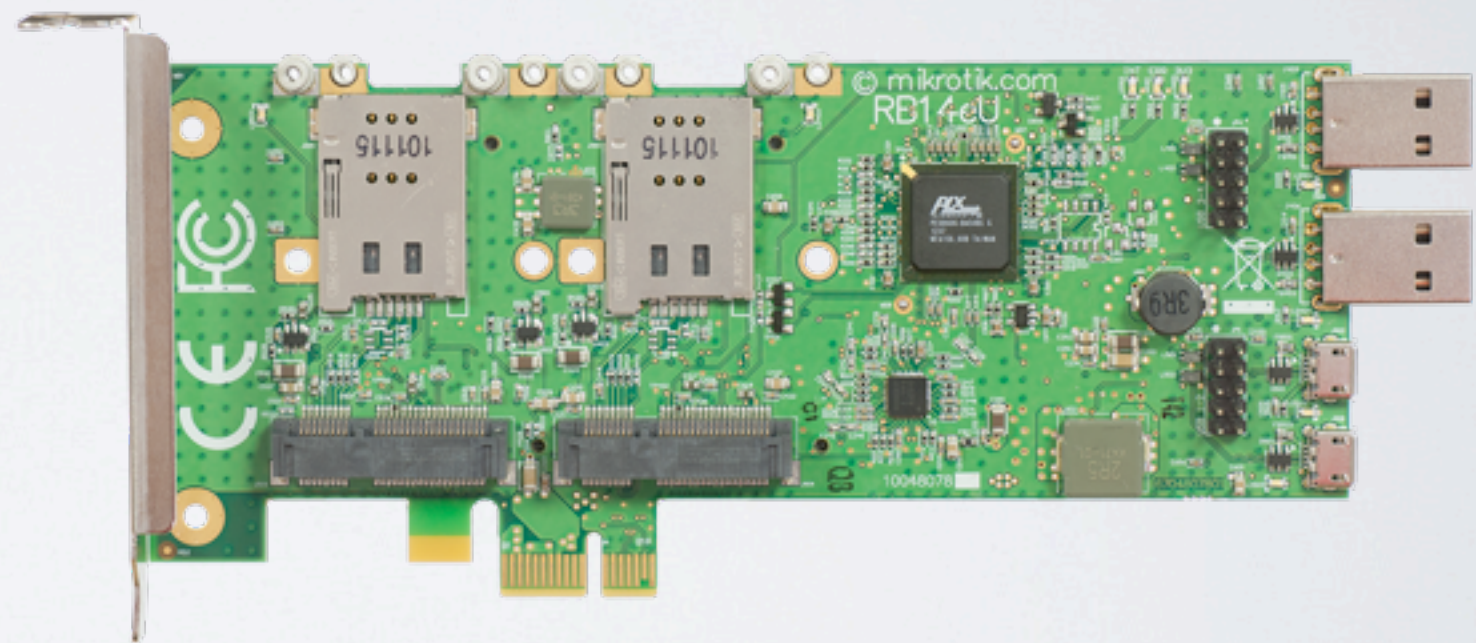
RIIE-HPND



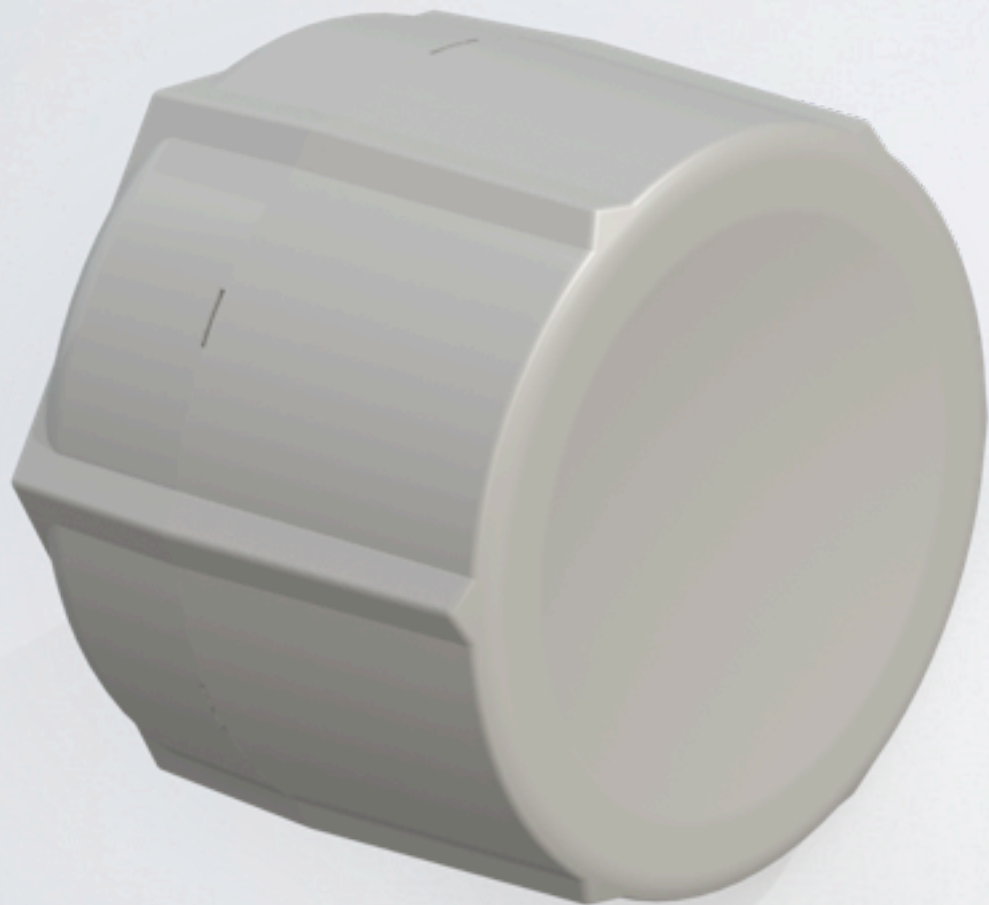
- miniPCI-e to fit RB912
- 2GHz and 5GHz models
- 1000mW power
- New AR9580 chipset
- MMCX

RB14EU

- 4 miniPCle card adapter
- RB14E for wireless
- RB14EU also for 3G



SXT HG

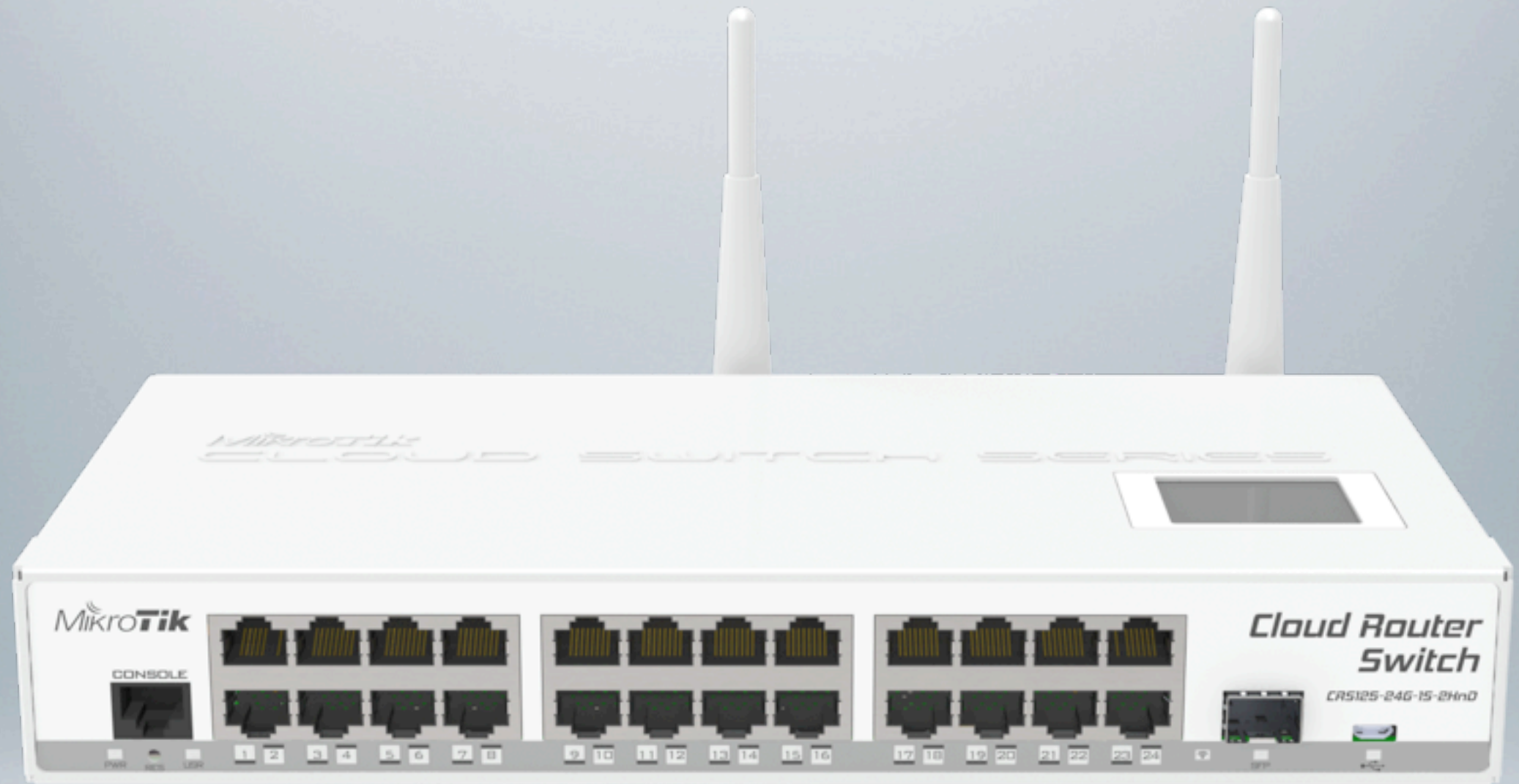


- Improved 17 dBi antenna
- New design
- 1000mW power
- Gigabit port
- 5GHz

QRT G



- New integrated antenna product at 2.4GHz
- 17 dBi
- Gigabit ethernet
- Custom RouterBOARD
- Super High power wifi



CLOUD ROUTER SWITCH

CRS



CRS

- 24 Switched Gigabit ports
- Powered by RouterOS
- SFP port
- Touchscreen LCD
- Wireless model available
- Comes in desktop or rackmount case
- Fully manageable smart switch

CRS I 25-24G IS-2HnD-IN	CRS I 25-24G IS-IN	CRS I 25-24G IS-RM
2GHz wireless	-	-
Desktop case	Desktop case	Rackmount
SFP	SFP	SFP
24 Gigabit ports	24 Gigabit ports	24 Gigabit ports
RouterOS	RouterOS	RouterOS

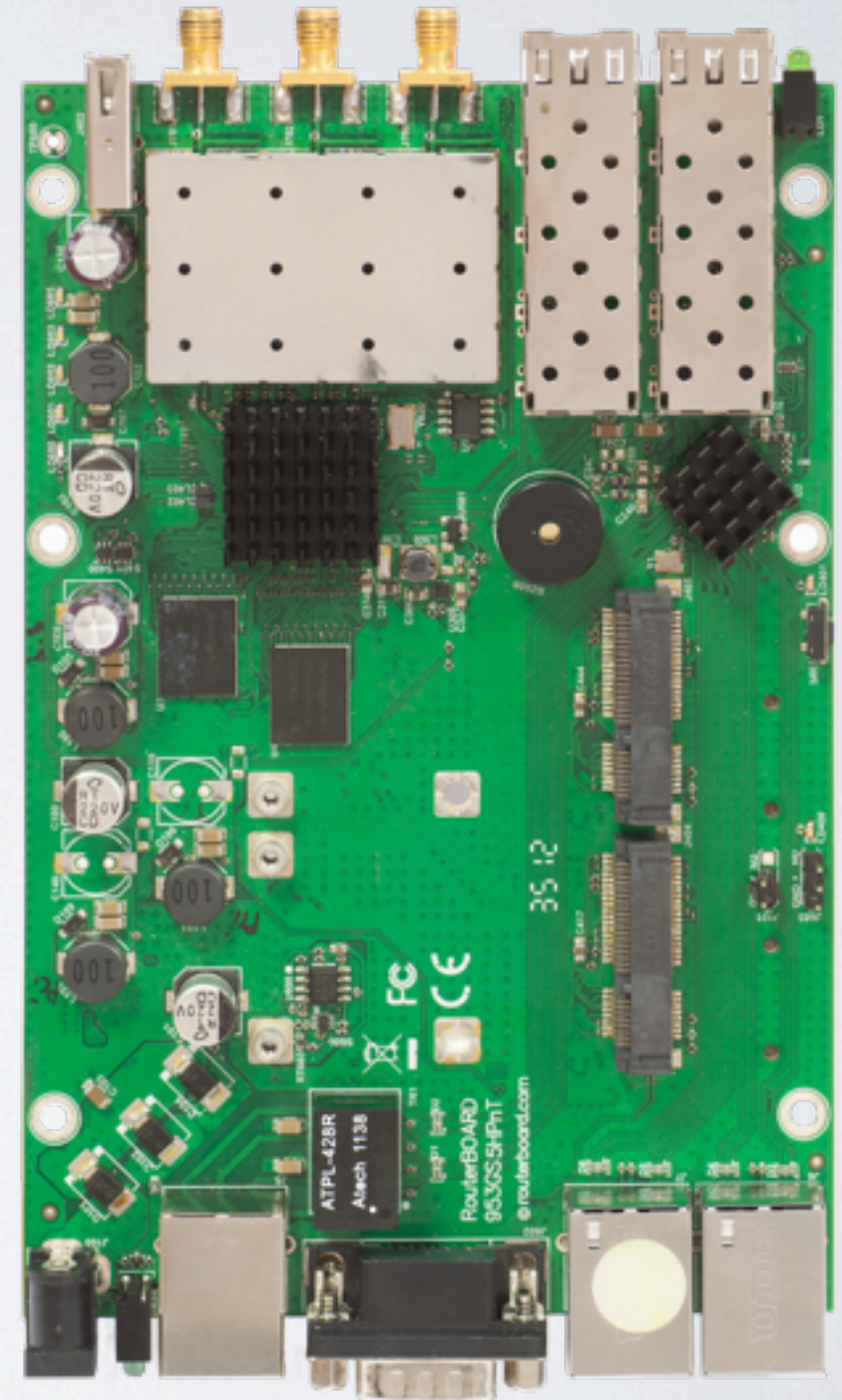
CCR1009

- 9 cores
- 8Gbit ports
- 1 SFP port
- 1 SFP+ port



RB953GS-5HnT

- New Atheros “Scorpion” CPU
- 3 Gigabit Ethernet ports
- 2 SFP cages
- 3 chain 5GHz wireless
- 2 miniPCle slots
- USB and 2 SIM slots



mAP

- PoE injector 8-57V
- Built in 2GHz AP
- microUSB for modem, or for powering AP
- Station or AP mode
- Any PoE in 802.3af and 802.3at
- Passive PoE output



CCR1016-12S-1S+



- 12 SFP ports
- 1 SFP+ port
- 16 core Tilera CPU
- Includes one SFP to RJ45 converter

Enjoy the MUM!