



MikroTik User Meeting in Croatia, 2013

Keynote overview

1. About the MUM
2. Recently announced products
3. New products

MUM #46 is in Croatia!



MikroTik

- 90 employees
- Established in 1996
- RouterOS in 1997
- RouterBOARD in 2002
- First MUM Prague 2006
- Biggest MUM Indonesia 2012







Where is Latvia?



Staff

- Janis Jankovskis (Sales)
- Edmunds Aperans (Sales)
- Janis Megis (Training)
- Sergejs Boginskis (Support)
- Normunds Rustanovics (Support)
- Uldis Cernevskis (Support)
- Arnis Riekstins (CTO)

32 Exhibitors

								
Corda Project (Croatia)	E-TE-CO (Slovenia)	CDR (Poland)	Wi4net (Italy)	Meconet (Germany)	FMS (Germany)	Virtua (Slovenia)	MARS ANTENNAS & RF Systems Ltd (Israel)	RF Elements (Slovakia)
								
itelite (Poland)	ISPadmin (Czech Republic)	MikroBill (Czech Republic)	Townet (Italy)	Jirous (Czech Republic)	Cyberteam (Poland)	Konsorcium ATS (Poland)	Discomp (Czech Republic)	Technologic (Poland)
								
Deltalink Electronic (Turkey)	SICE (Italy)	HS Manager (Italy)	Nim Wave (Italy)	Tachos (Brazil)	WifiProf1 (Czech Republic)	Cyberbajt (Poland)	Wireless Instruments sp. z o.o. (Belarus)	idea4tec (Poland)
								
InterCrown (Hungary)	BrByte Telecomunicações (Brazil)	MTI Wireless Edge Ltd. (Israel)	Linkit (Italy)	P.W.Batna Magdalena Mucha (Poland)				

Special Thanks



After the MUM

- Presentation slides - wiki.mikrotik.com
- Presentation videos - tiktube.com
- License - will be sent by e-mail within few days

RECENTLY INTRODUCED

CCR 1036

- 36 core CPU
- 12 Gigabit Ethernet ports
- 4 SFP ports



CCR 1016

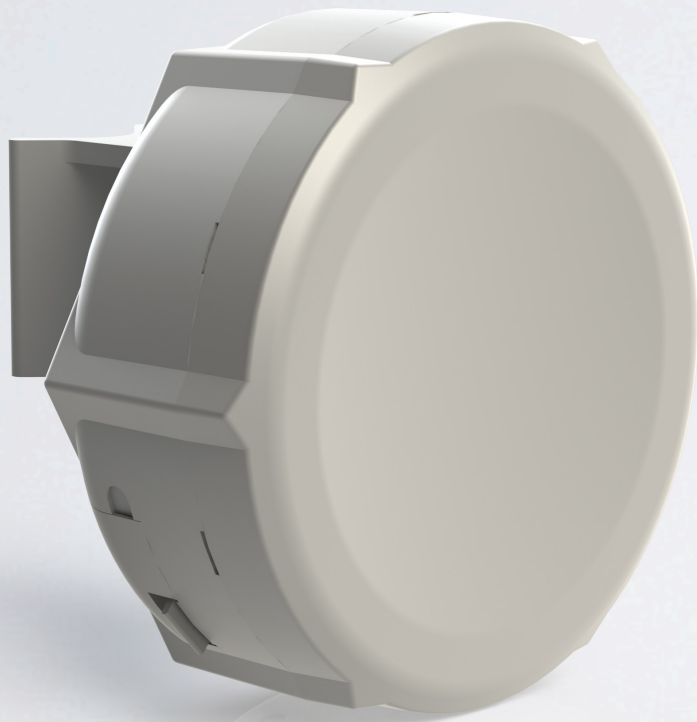
- 16 core CPU
- 12 Gigabit Ethernet ports



CCR IMPROVEMENTS

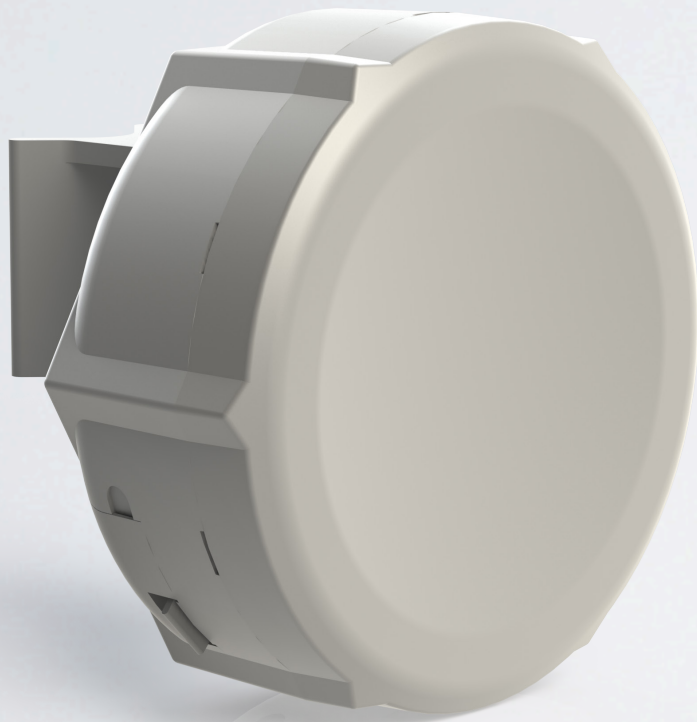
- Software updated all the time
- Brings speed improvements for many features
- Simple Queues now 9x faster on CCR
- Hw encryption, L7, PPP and others in the works

SXT 5GHZ



- High power model (30dBm, 5HPnD)
- “Lite” model (27dBm, Lite5)
- Both have new generation CPU

SXT 2GHZ



- High power Gigabit (32dBm, G-2HnD)
- “Lite” model (27dBm, Lite2)
- Both have new generation CPU

RB 1100HX2

- Dual core
- 1GB RAM
- No HW encryption engine
- Affordable



RB951G

- AR9xxx series CPU
- Gigabit Ethernet
- 128MB RAM
- 2.4GHz
- 1000mW output



RB260GS

- Hardware Switch
- Powered by SwOS
- SFP port for Active fiber
- Simple Fiber to Copper



SFP MODULES

- Disruptive price (from \$22)
- Single or Multi mode
- 550m or 20Km
- DDM supported

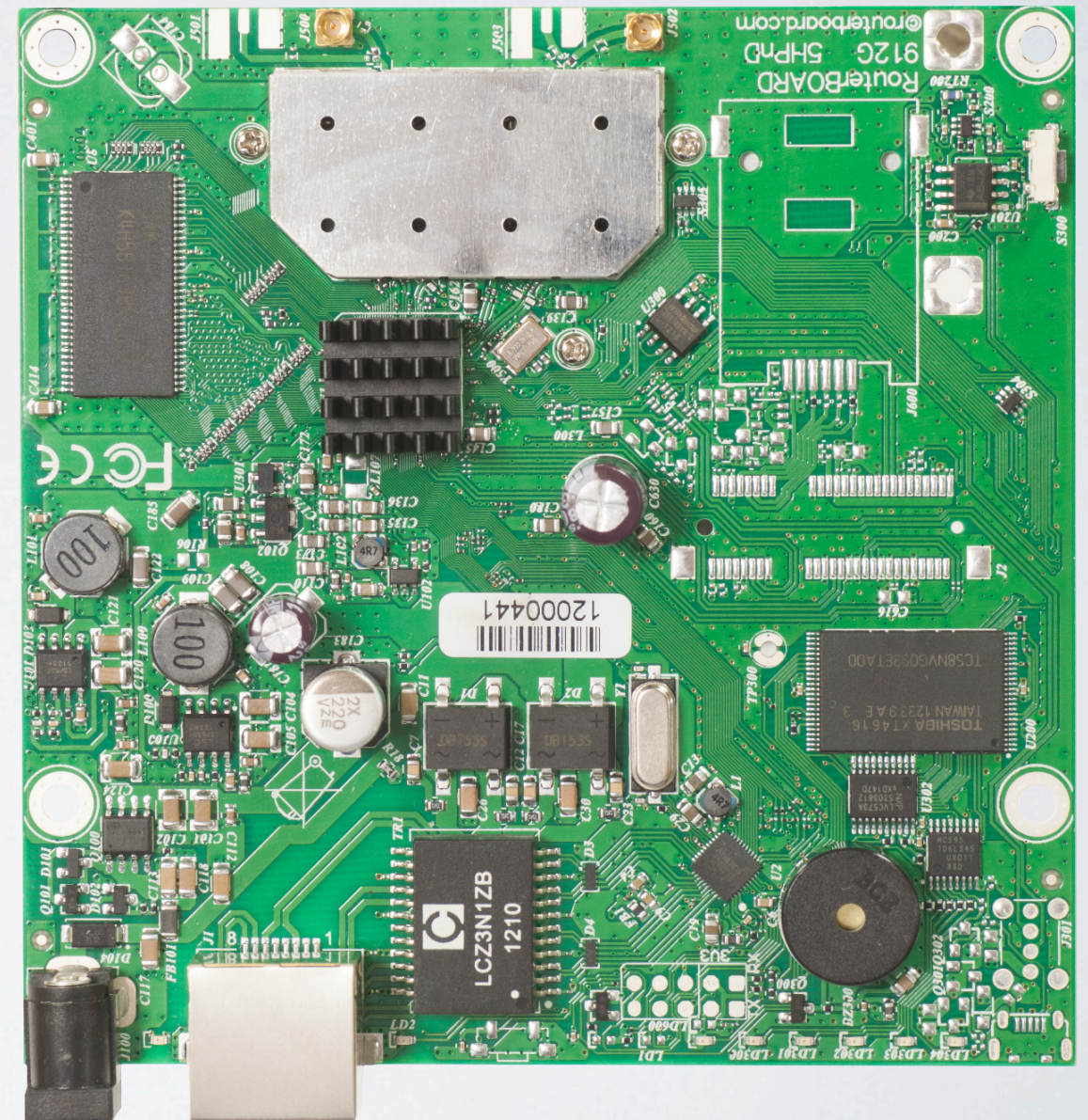


NEW PRODUCTS

RB911G



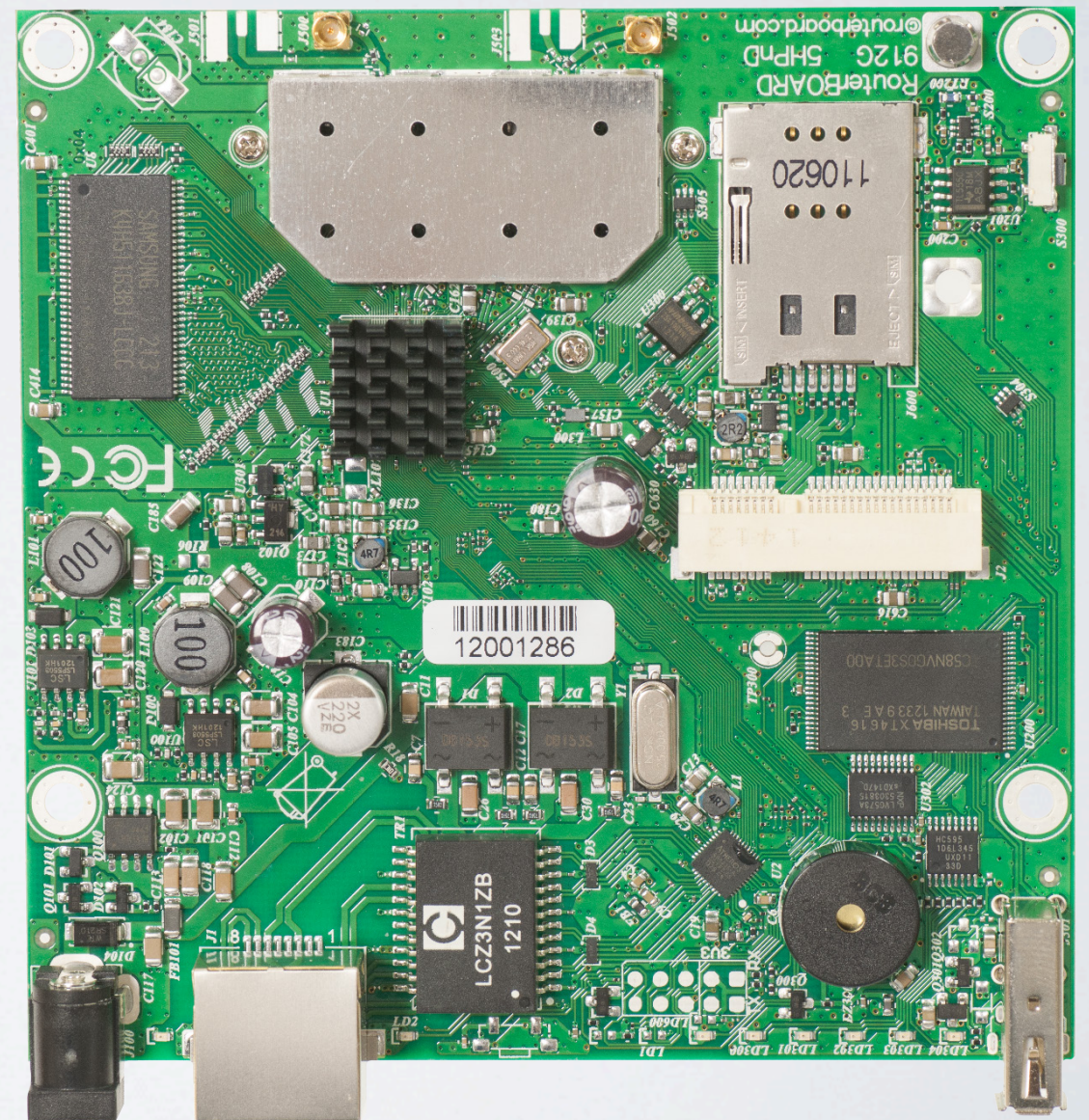
- AR9xxx series CPU
- 2 or 5GHz models
- Gigabit ports, Dual Chain
- 30dBm (1000mW)



RB9 12G



- miniPCI-e slot
- USB, more RAM
- 2 or 5GHz models
- Can be used for Multiband AP



RB912G OUTDOOR



- SMA connectors
- Cable hood with rain protection
- Multiple mounting options
- 2 or 5GHz models



SEXTANT G



- 5GHz, 1000mW
- RB911 inside
- 18dBi dual pol antenna



CCR EXTENDED RAM



- Same as CCR1036-12G-4S
- 16GB of RAM included



R11E-2HND



- miniPCI-e to fit RB912
- 2GHz model
- 800mW power
- New AR9580 chipset
- uFl connectors

R | I | E-HPND

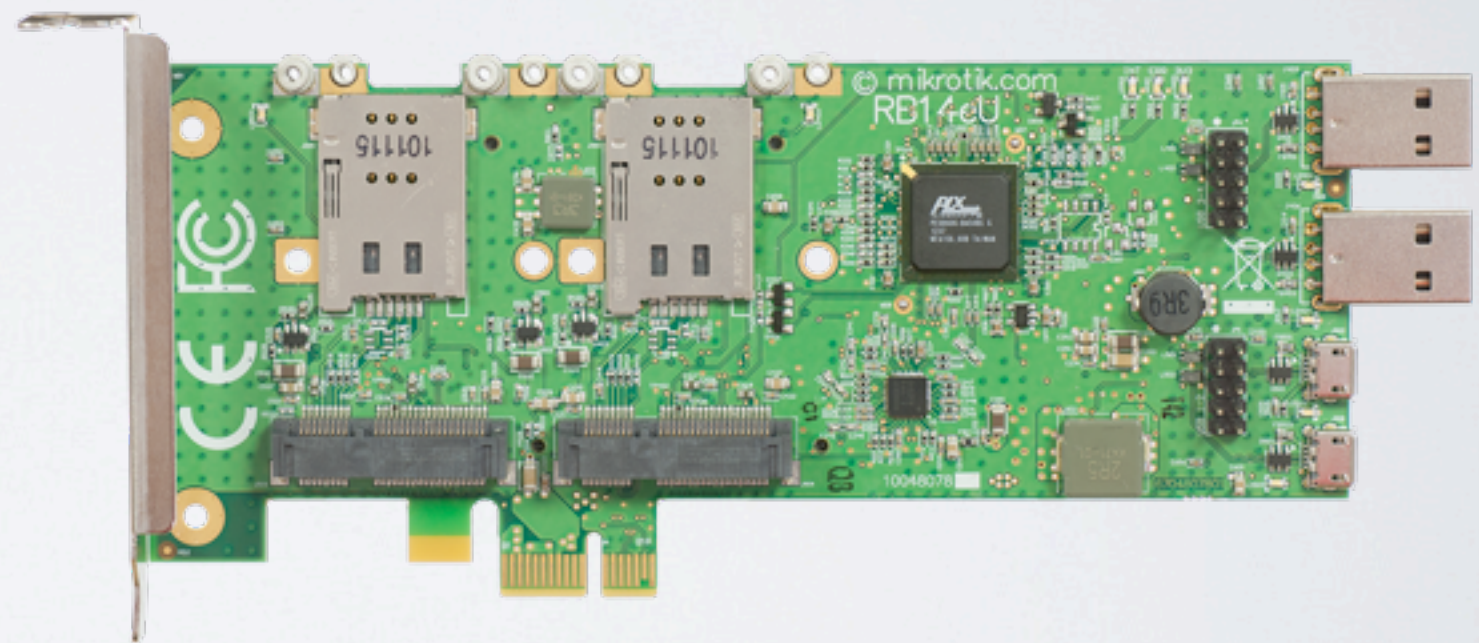


- miniPCI-e to fit RB912
- 2GHz and 5GHz models
- 1000mW power
- New AR9580 chipset
- MMCX

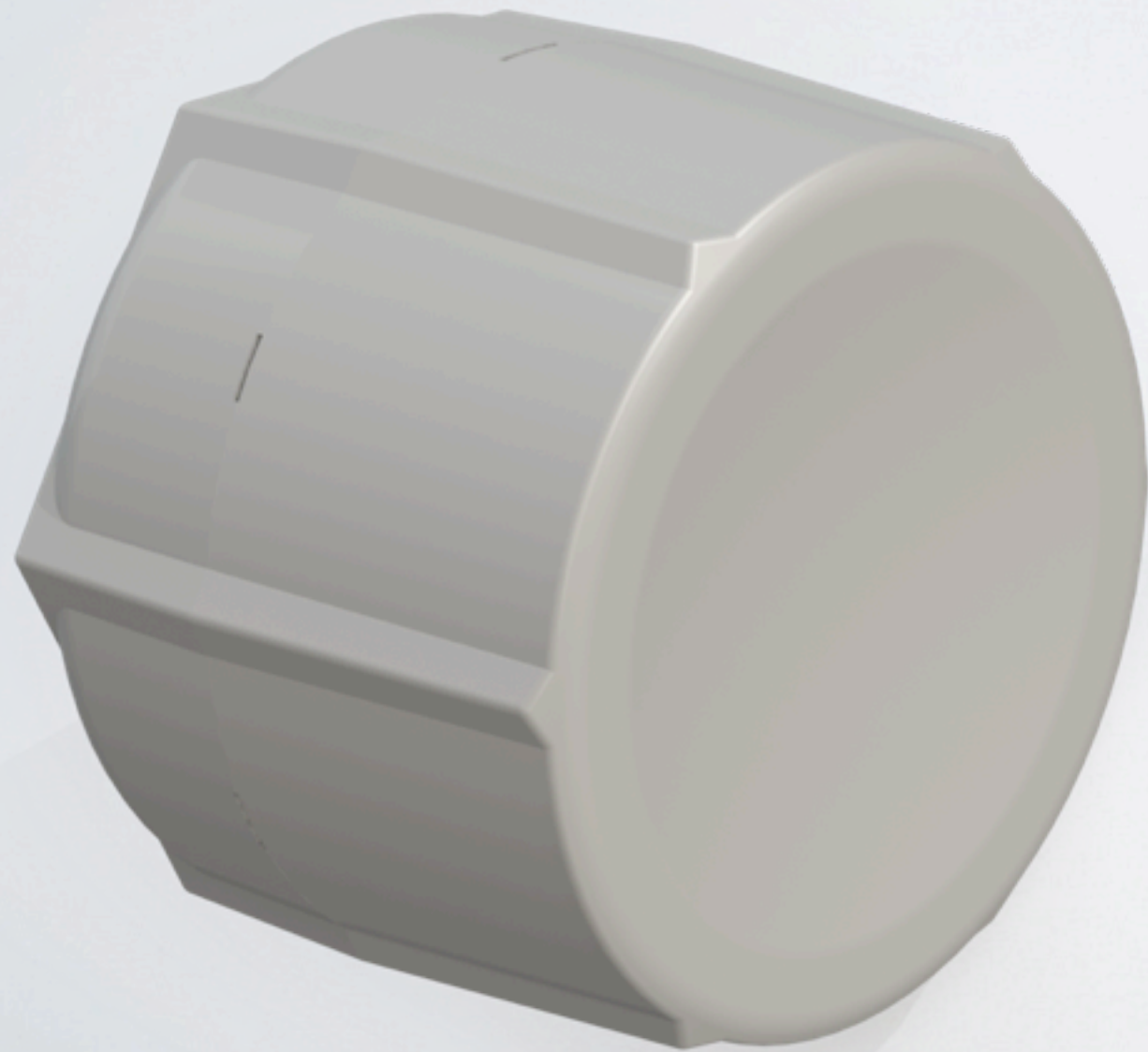
RB14EU



- 4 miniPCle card adapter
- RB14E for wireless
- RB14EU also for 3G

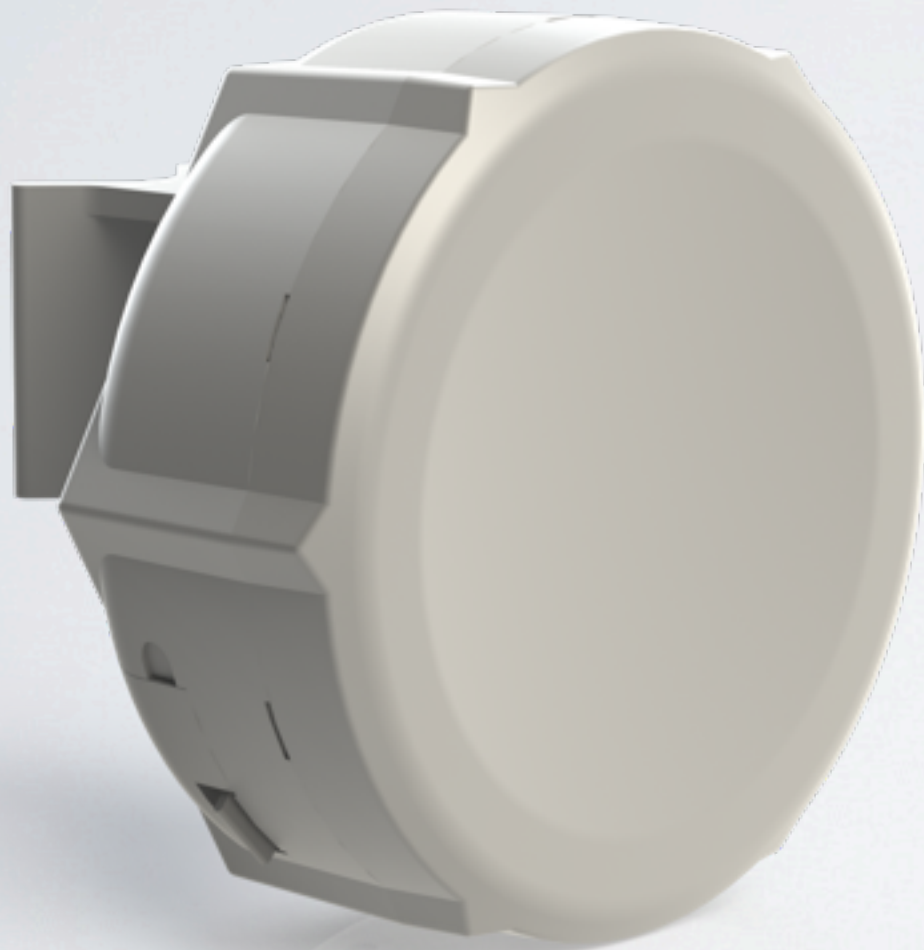


SXT HG



- Improved 17 dBi antenna
- New design
- 1000mW power
- Gigabit port
- 5GHz

SXT SA



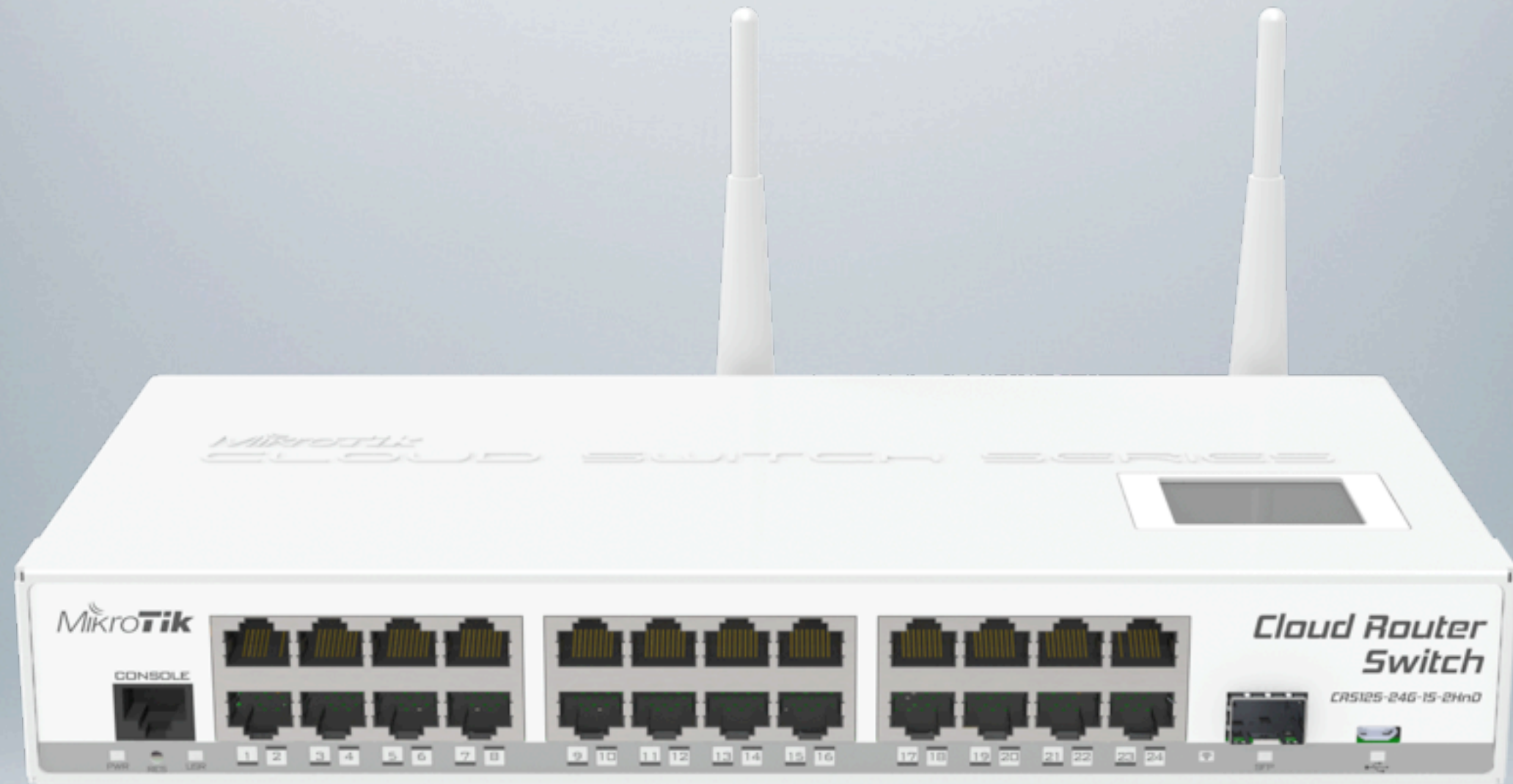
- Wide beamwidth, 90 degrees
- Can be used as Sector
- 1000mW power
- Gigabit port
- 5GHz

GROOVE 52



- Both bands built in
- Select 2 or 5Ghz
- AR9xxx CPU
- CPE or AP models available





CLOUD ROUTER SWITCH

CRS

CRS



- 24 Switched Gigabit ports
- Powered by RouterOS
- SFP port
- Touchscreen LCD
- Wireless model available
- Comes in desktop or rackmount case
- Fully manageable smart switch

CRS I 25-24G IS-2HnD-IN	CRS I 25-24G IS-IN	CRS I 25-24G IS-RM
2Ghz wireless	-	-
Desktop case	Desktop case	Rackmount
SFP	SFP	SFP
24 Gigabit ports	24 Gigabit ports	24 Gigabit ports
RouterOS	RouterOS	RouterOS



CLOUD CORE ROUTER

SFP+

CCR1036-8G-2S+



- 8 Gigabit Ethernet ports, **2 SFP+** ports
- **10G** interfaces now possible
- 16GB RAM model also available
- Highest performance MikroTik device ever
- Port speed no longer bottleneck, speed **2x**
- Total port speed **28Gbit**, which is new bottleneck
- Up to **42** million packets per second

Enjoy the MUM!